



AP450
AIR PURIFIER



AP450
AIR PURIFIER



MANUAL





THANK YOU

Congratulations on purchasing the Allergy Pro™ professional air purifier and your commitment to controlling the quality of your indoor air.

Welcome to an ideal world. With the Allergy Pro™ professional air purifier, we provide true HEPA filtration to purify the air and remove allergens. Get ready to experience cleaner, healthier air!

Please note: It is crucial that you read and follow all the instructions and safety warnings in this manual for optimal performance of your air purifier and your health and safety.

envionproducts.com

Allergy Pro™
P.O. Box 9159
Van Nuys, CA 91409-8291
800.875.8577

TABLE OF CONTENTS

SAFETY INSTRUCTIONS	2
PRODUCT BENEFITS	2
KNOWING YOUR ALLERGY™ PRO 450 AIR PURIFIER	4
Main Parts	4
PROPER USAGE	5
OPERATING THE ALLERGY PRO™ 450 AIR PURIFIER	6
Control Panel	6
Digital Display	7
MAINTENANCE	8
Maintaining the Allergy Pro™ 450 Air Purifier	8
TROUBLE-SHOOTING	9
CUSTOMER SERVICE CONTACT INFORMATION	10
ONE-YEAR LIMITED WARRANTY	11
ARBITRATION AGREEMENT	12

SAFETY INSTRUCTIONS

READ AND SAVE THESE INSTRUCTIONS

WARNING: RISK OF ELECTRICAL SHOCK

Safety precautions should always be used when operating this or any electrical appliance. Decrease the risk of electrocution, electric shock, injury or fire by reading and following all the warnings below.

Use this product only as described in this Allergy Pro™ professional air purifier owner's guide. To reduce the risk of electric shock, do not attempt to service the product in any way other than in the manner described in the "Maintenance" section of this guide.

- ⦿ Read all instructions before operating the Allergy Pro™ professional air purifier.
- ⦿ This product operates at 120V AC, 60Hz only.
- ⦿ Do not run the power cord under carpets, or cover with throw rugs.
- ⦿ Do not operate the product in a greasy environment such as in the kitchen. This product is not intended to filter oil or grease from air.
- ⦿ Do not use the Allergy Pro™ professional air purifier in bathrooms or other humid environments, near fireplaces or in areas where flammable or combustible vapors or products may exist.
- ⦿ Always unplug the power cord from the electrical outlet when the purifier is not in use, before cleaning, inserting or removing parts or before moving to another location.
- ⦿ Never run the air purifier unless it is fully assembled.
- ⦿ To reduce the risk of electric shock, this product has a polarized plug (one blade is wider than the other). This plug will fit into a polarized outlet only one way. If the plug does not fit into the outlet, contact qualified service personnel to install the proper outlet. Do not alter the plug in any way.
- ⦿ Always turn off all controls before unplugging the Allergy Pro™ professional air purifier from outlet.
- ⦿ Attempting to service the Allergy Pro™ professional air purifier in any way not described in this owner's guide will void the warranty and could cause serious personal injury to the user and/or result in considerable damage to the unit.
- ⦿ Do not place the cord near a heated surface.
- ⦿ Never operate the Allergy Pro™ professional air purifier if the plug or cord is damaged or appears damaged. Only qualified service personnel should replace a damaged power cord.
- ⦿ Never use the power cord to pick up, carry, drag, pull or lift the Allergy Pro™ professional air purifier. Do not pull the cord against or around sharp corners and edges. This could result in injury to the user or damage to the cord.
- ⦿ Always remove the plug from its power outlet by holding onto the plug itself and pulling gently. Never pull on the cord itself to unplug it from its power outlet.
- ⦿ Use care when operating the Allergy Pro™ professional air purifier by keeping all foreign objects, fingers and other body parts, hair, loose clothing and jewelry away from openings.
- ⦿ Never touch the Allergy Pro™ professional air purifier or its plug when your hands are wet.
- ⦿ The Allergy Pro™ professional air purifier is an electrical appliance. Adult supervision is required when operating around children.

PRODUCT BENEFITS

THE REVOLUTIONARY ALLERGY PRO™ PROFESSIONAL AIR PURIFIER CLEANS AIR WITH A TRUE HEPA FILTER.

The Allergy Pro™ professional air purifier boasts many great features:

- ⦿ True HEPA filter removes particles from the air. Captures at least 99.97% of allergens and irritants that pass through the filter down to 0.1 microns.
- ⦿ Effectively removes smoke, pollen, dust, animal dander, dust mites from the air.
- ⦿ Powerful and quiet fan has 4 speed settings to select desired cleaning level.
- ⦿ A 24 hour timer to set the time of operation, from 1 hour up to 24 hours.
- ⦿ Built-in ionizer revitalizes air.
- ⦿ Low power consumption-energy efficient, Energy Star approved.

AP450

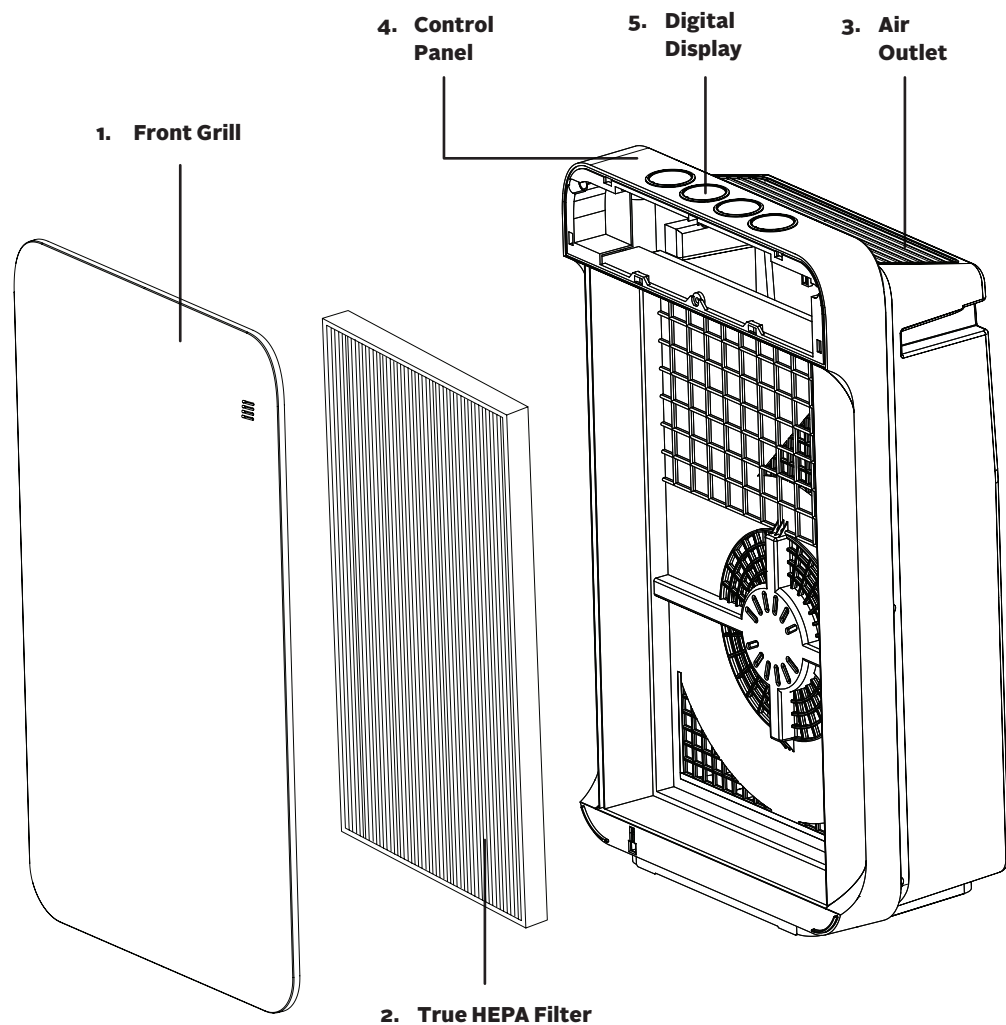
AIR PURIFIER



KNOWING THE ALLERGY PRO™ AP450 AIR PURIFIER

MAIN PARTS

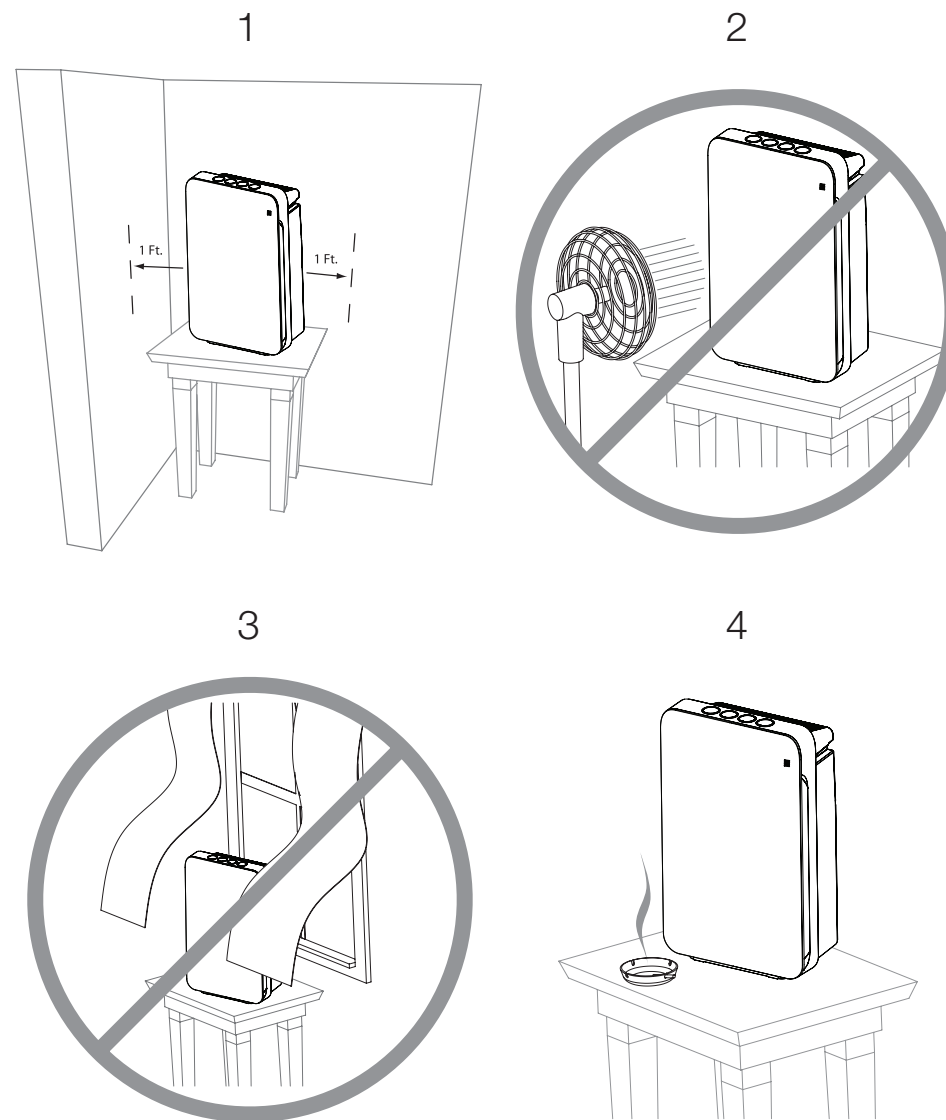
1. **Front Grill**
2. **True HEPA Filter**
3. **Air-Outlet**
4. **Control Panel**
5. **Digital Display:** indicates setting and whether the unit is on or off.



PROPER USAGE

Please note: make sure the true HEPA filter is properly installed before use.

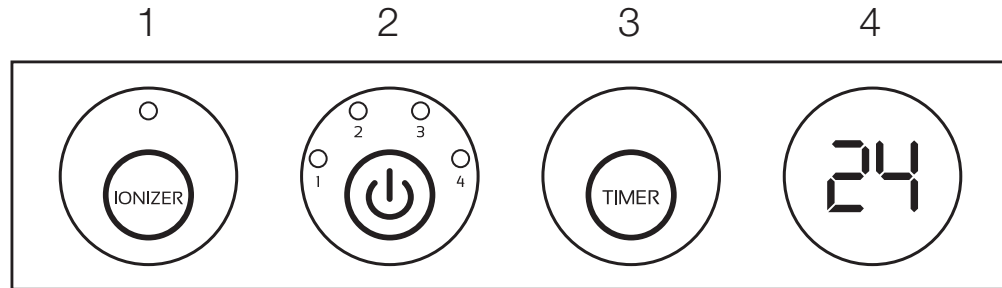
1. Keep both sides of the unit more than 1 foot away from a wall.
2. Do not blow air from a fan or air conditioner directly into the air purifier.
3. Do not place the unit where the air inlet or outlet grill could come in contact with a curtain.
4. Placing the unit close to the source of air pollution can improve indoor air quality effectively.



OPERATING THE ALLERGY PRO™ AP450 AIR PURIFIER

Plug the unit into an electrical outlet. The unit will be ready to run. Read the following directions to select desired settings.


CONTROL PANEL



1. Ionizer Indicator


Press the **IONIZER** button to turn on the ionizer while the fan is running and press it again to turn off the ionizer.

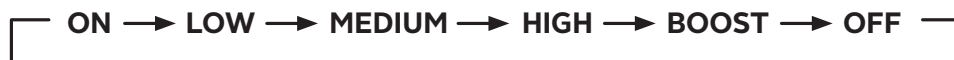
2. ON/OFF and Fan Speed Indicator

Press the  button to turn on your air purifier.

There are four fan speed settings labeled **1 – Low, 2 – Medium, 3 – High, 4 – Boost**. Each mode has its own indicator light which lights up when the setting is chosen.

The speed selected determines how rapidly you want to sanitize the air. The “**LOW**” and “**MEDIUM**” settings are great for everyday use. The “**HIGH**” setting is great for areas with more airborne contaminants (such as excessive smoke, pet dander, etc), or areas used frequently by allergy-sufferers. The “**BOOST**” setting is best used for shorter bursts of time when you want to rapidly purify the air.

When the air purifier is plugged in and turned on for the first time, the fan will run at low speed. Press the  button to cycle through the fan speeds show below:

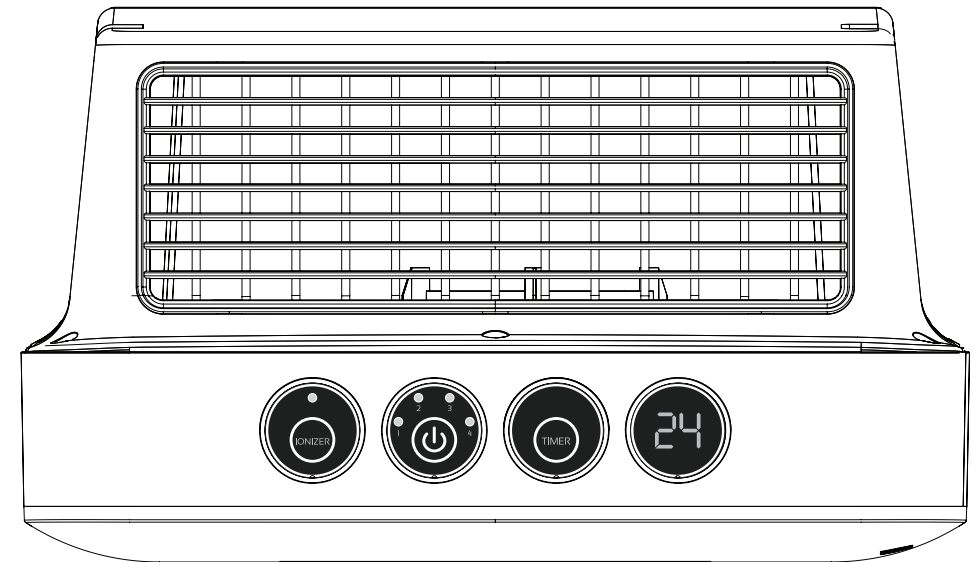


OPERATING THE ALLERGY PRO™ AP450 AIR PURIFIER

3. & 4. 1–24 Hour Timer

While the fan is running, press the **TIMER** button to select the desired run time (in hours) on the digital indicator:

Once the time is set, the timer will automatically turn off the unit when the selected time has expired. It can be selected for 1 hour to 24 hours.



Electrical Ratings

- 120 volt / 60 Hz
- Power consumption / 105 watts

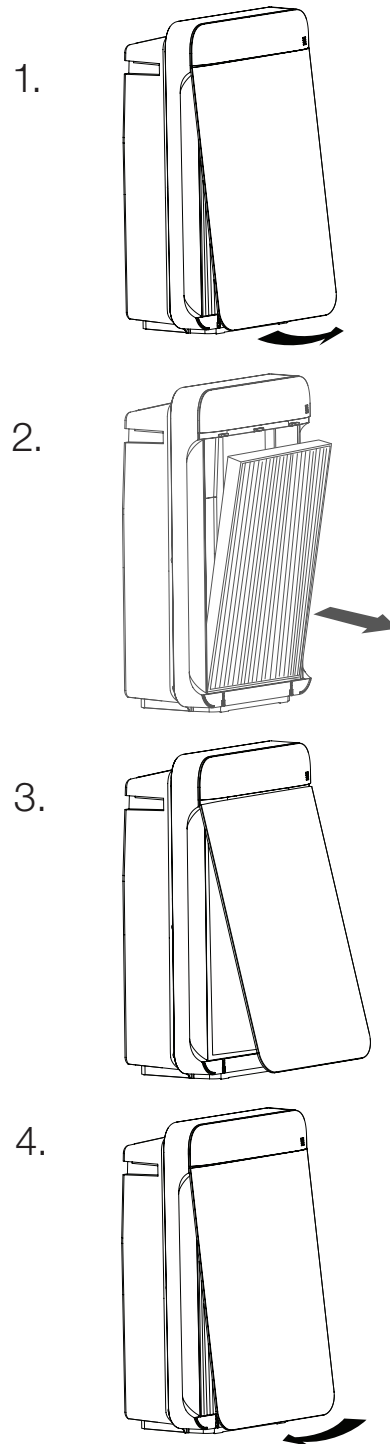
MAINTENANCE

The Allergy Pro™ professional air purifier is almost maintenance free! Our true HEPA filter lasts up to twelve months, depending on use and environment conditions. It is recommended to replace the true HEPA filter every twelve months.

Before replacing the true HEPA filter of your Allergy Pro™ professional air purifier, turn off and unplug the unit from the electrical outlet and read all safety instructions and important warnings in this owner's manual.

REPLACING THE TRUE HEPA FILTER

1. Make sure unit is turned off and unplugged. With the front of the unit facing forward, pull the lid towards you at the lower end of the inlet grill as shown and remove the front grill.
2. Remove the true HEPA filter by lifting and pulling the string on both sides of the filter.
3. Insert a new true HEPA filter, then insert the top of the inlet grill first and then snap the lower part of the inlet grill back into position.
4. To close the front grill, first make sure the top hooks are properly in place before snapping it up to its upright and locked position.



TROUBLESHOOTING

Before contacting our customer service department, please try the following solutions:

PROBLEM	REASON	SOLUTION
Unit will not operate	ON/OFF button has not been pressed.	Press the ON/OFF button.
	Unit is unpugged.	Check to ensure unit is plugged in.
	The inlet grill has not been installed or put back into place properly.	Check to make sure filters are properly installed & the inlet grill is installed and locked into place. (See instructions on pg. 8).
Reduced airflow or poor filtering	The inlet or outlet grill may be blocked.	Check to ensure nothing is in front of or on top of the purifier.
	The HEPA filter may be clogged.	Check the filter and replace if necessary. (See instructions on pg. 8).

CONTACT US

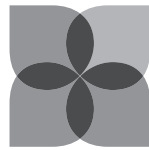
IF YOU HAVE ANY QUESTIONS REGARDING YOUR ALLERGY PRO™ AP450 PROFESSIONAL AIR PURIFIER:

Please call customer service at:

800.875.8577

Or send mail to:

Allergy Pro™ / P.O. Box 9159
Van Nuys, CA 91409-8291



allergy pro™
PROFESSIONAL AIR PURIFIER

ONE-YEAR LIMITED WARRANTY

ONE YEAR LIMITED WARRANTY

Your Allergy Pro™ AP450 air purifier is warranted to be free from defects in materials and workmanship for one year from the original purchase date. Should the product have a defect in materials or workmanship, we will repair or replace it without charge to you (a shipping and processing fee will apply). To obtain service under warranty, simply call our customer service center toll-free at **800.875.8577** | M-F 7-4 PST / 7-3 Sat.

This warranty does not cover damage caused by accident, misuse or any use other than as intended and described in this product manual, or damage resulting from failure to maintain and clean this product as specified in this product manual. This warranty applies only to the original purchaser of the Allergy Pro™ AP450 air purifier.

ALL EXPRESS AND IMPLIED WARRANTIES FOR THIS PRODUCT, INCLUDING IMPLIED WARRANTIES OF MERCHANTABILITY AND FITNESS FOR A PARTICULAR PURPOSE, ARE LIMITED IN DURATION TO THE WARRANTY PERIOD, AND NO WARRANTIES, WHETHER EXPRESS OR IMPLIED, WILL APPLY AFTER THIS PERIOD.

Some states do not allow limitations on the duration of implied warranties, so the above limitation may not apply to you. While this warranty gives you specific legal rights, you may also have other rights which may vary from state to state.

Contact Info for Warranty Service:

Allergy Pro™

P.O. Box 9159 | Van Nuys, CA | 91409-8291
1.800.875.8577 | envionproducts.com

© 2018 Envion, LLC. All Rights Reserved. Patents Pending.

The energy efficiency of this ENERGY STAR qualified model is measured based on a ratio between the model's CADR for dust and the electrical energy it consumes, or CADR/Watt.



This product earned the ENERGY STAR by meeting strict energy efficiency guidelines set by the US EPA. US EPA does not endorse any manufacturer claims of healthier indoor air from the use of this product.

ARBITRATION AGREEMENT

PLEASE READ THIS AGREEMENT CAREFULLY. YOU ACCEPT THE TERMS OF THIS AGREEMENT BY RETAINING THE PRODUCT(S) SHIPPED IN CONNECTION WITH THIS AGREEMENT (THE “PRODUCTS”) FOR MORE THAN THIRTY (30) DAYS AFTER RECEIPT. IF YOU DO NOT AGREE TO THE TERMS OF THIS AGREEMENT, YOU MAY RETURN THE PRODUCT TO COMPANY WITHIN THIRTY (30) DAYS OF RECEIPT FOR A FULL REFUND.

THIS ARBITRATION AGREEMENT (“AGREEMENT”) CONTAINS A MANDATORY ARBITRATION PROVISION THAT AFFECTS YOUR LEGAL RIGHTS AND REMEDIES BY PROVIDING THAT DISPUTES BETWEEN YOU AND THE MANUFACTURER, DISTRIBUTOR AND/OR SELLER OF THIS PRODUCT (COLLECTIVELY, “COMPANY”), MUST BE RESOLVED THROUGH BINDING ARBITRATION AND NOT IN COURT. IT ALSO PROVIDES THAT ANY DISPUTE CANNOT BE RESOLVED IN A CLASS ACTION OR OTHER PROCEEDING WHERE YOU REPRESENT OTHER PERSONS OR OTHER PERSONS REPRESENT YOU, AND THAT NO CLASS OR REPRESENTATIVE ARBITRATIONS ARE PERMITTED. PLEASE CAREFULLY READ ALL TERMS IN THIS AGREEMENT.

1. RESOLUTION OF CLAIMS OR DISPUTES.

Any claim or dispute between you and Company (or any of Company's subsidiaries or affiliates) arising out of or relating in any way to the Product or this Agreement shall be resolved through final, binding arbitration. This arbitration obligation is reciprocally binding on both you and the Company and applies regardless of whether the claim or dispute involves a tort, fraud, misrepresentation, product liability, negligence, violation of a statute, or any other legal theory. Both you and Company specifically acknowledge and agree that you waive your right to bring a lawsuit based on such claims or disputes and to have such lawsuit resolved by a judge or jury.

2. LIMITATION OF LEGAL REMEDIES.

All arbitrations under this Agreement shall be conducted on an individual (and not a class-wide) basis, and an arbitrator shall have no authority to award class-wide relief. You acknowledge and agree that this Agreement specifically prohibits you and the Company from commencing arbitration proceedings as a representative of others or joining in any arbitration proceedings brought by any other person. The parties agree that no class or representative actions of any type are permitted.

3. ARBITRATION PROCEDURES.

- a.** Before instituting an arbitration, if you have any dispute, we strongly encourage you to contact the Company to try to resolve the matter by calling 800-218-3560, although you are not required to do so.
- b.** The arbitration of any claim or dispute under this Agreement shall be conducted in accordance with the expedited procedures set forth in the JAMS Comprehensive Arbitration Rules and Procedures as those Rules exist on the date you receive the Product, including Rules 16.1 and 16.2 of those Rules. These rules and procedures are available by calling JAMS or by visiting its web site at www.jamsadr.com. The arbitration of any claim or dispute under this Agreement shall be conducted by an arbitrator who has at least five years of experience conducting arbitrations.
- c.** The arbitration of any claim or dispute under this Agreement shall be conducted in the State of California or the location in which you received this Agreement. For claims of \$10,000 or less, you may choose whether the arbitration proceeds in person, by telephone, or based only on submissions.
- d.** The Company shall pay costs for the arbitration of claims, including any JAMS Case Management Fee and all professional fees for the arbitrator's services. The Company shall pay the fees and costs of its own counsel, experts and witnesses and shall not be able to recoup them from you even if you do not prevail in the arbitration. Unless otherwise provided by law, you acknowledge and agree that you shall pay the fees and costs of your own counsel, experts and witnesses.

4. CHOICE OF LAW.

The arbitration provisions of this Agreement and any arbitration conducted pursuant to the terms of this Agreement shall be governed by the Federal Arbitration Act (9 U.S.C. Secs. 1-16). In this respect, the parties acknowledge that this Agreement involves a transaction conducted in interstate commerce. Otherwise, this Agreement and the rights of the parties hereunder shall be governed by and construed in accordance with the laws of the State of California, exclusive of conflict or choice of law rules.

5. SEVERABILITY.

If any provision of this Agreement is declared or found to be unlawful, unenforceable or void, such provision will be ineffective only to the extent that it is found unlawful, unenforceable or void, and the remainder of the provision and all other provisions shall remain fully enforceable.

